

Location

Moorabbin Airport



Project Overview

The proposal delivers 2 new buildings in the South West corner of the airport (Precinct 7 in the approved Airport Master Plan).

The contemporary designed industrial development includes fully integrated carparking, landscaping, services and vehicle access points.

Construction is expected to start in mid-2018.

The development will provide an operational buffer for airport neighbours from current and future on-airport activities including ground based aviation operations and airport traffic.

Shadows from the buildings will result in only a slight increase at 9am, with no increase through the balance of the day.

The investment required for the development

and associated infrastructure (new internal airport road and new services) is fully funded by the Airport.

Project Detail

Warehouse One Summary

- warehouse and office for goods distribution (no manufacturing or packaging)
- 41 new jobs;
- 4,008m² warehouse + 432m² office;
- 41 car spaces;
- 2.0m acoustic fencing on airport boundary;
- Setback of 7.3m from southern and western airport boundaries to the built form including landscaping with new canopy trees and timber paling fencing along Bundora Parade.
- Operating hours - Mon to Fri 6am to 6pm.
- Access is from a new internal airport road.
- Recessed loading docks 50m from residential properties. Truck access and loading on north side of the warehouse site (i.e. away from the airport boundary).

Warehouse Two (smaller) Summary

- A warehouse and office for the goods distribution (no manufacturing or packaging will occur on site)
- 28 new jobs.
- 3,034m² Warehouse + 334m² office.
- 28 car spaces.
- Setback of 6.0m from southern and western airport boundaries to the built form including landscaping with new canopy trees and timber paling fencing along Bundora Parade
- 2.0m acoustic fencing on airport boundary.
- Operating hours - Mon to Fri 7am to 5pm.
- Access is from a new internal airport road.
- Recessed loading docks 50m from residential properties. Truck access and loading on north side of the warehouse site (i.e. away from Bundora Parade).

Comments invited

MAC is assessing this application and you are invited to provide comments to:

development@moorabbinairport.com.au

or in writing to;
Moorabbin Airport Corporation
66 Bundora Parade,
Moorabbin Airport VIC 3194

by 5.00pm Friday, 16 March 2018.

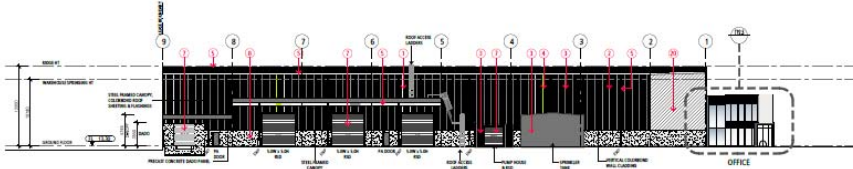
This Update is available on-line, and can be enlarged using the zoom tool



Warehouse One



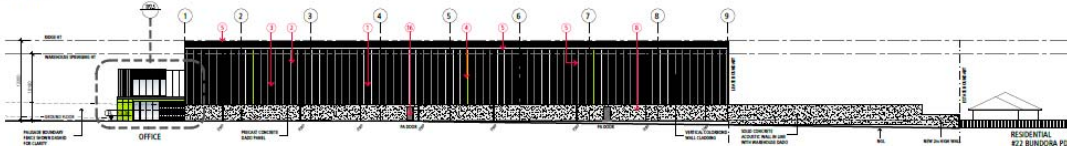
NORTH ELEVATION
SCALE: 1:250



EAST ELEVATION
SCALE: 1:250



SOUTH ELEVATION
SCALE: 1:250



WEST ELEVATION - BUNDORA PARADE
SCALE: 1:250

SCHEDULE	EXTERNAL FINISH
1	PERFORATED METAL, COLOUR: 'SUNSHINE'
2	PERFORATED METAL, COLOUR: 'SUNSHINE'
3	PERFORATED METAL, COLOUR: 'SUNSHINE'
4	PERFORATED METAL, COLOUR: 'SUNSHINE'
5	PERFORATED METAL, COLOUR: 'SUNSHINE'
6	PERFORATED METAL, COLOUR: 'SUNSHINE'
7	PERFORATED METAL, COLOUR: 'SUNSHINE'
8	PERFORATED METAL, COLOUR: 'SUNSHINE'
9	PERFORATED METAL, COLOUR: 'SUNSHINE'
10	PERFORATED METAL, COLOUR: 'SUNSHINE'
11	PERFORATED METAL, COLOUR: 'SUNSHINE'
12	PERFORATED METAL, COLOUR: 'SUNSHINE'
13	PERFORATED METAL, COLOUR: 'SUNSHINE'
14	PERFORATED METAL, COLOUR: 'SUNSHINE'
15	PERFORATED METAL, COLOUR: 'SUNSHINE'
16	PERFORATED METAL, COLOUR: 'SUNSHINE'
17	PERFORATED METAL, COLOUR: 'SUNSHINE'
18	PERFORATED METAL, COLOUR: 'SUNSHINE'
19	PERFORATED METAL, COLOUR: 'SUNSHINE'
20	PERFORATED METAL, COLOUR: 'SUNSHINE'
21	PERFORATED METAL, COLOUR: 'SUNSHINE'
22	PERFORATED METAL, COLOUR: 'SUNSHINE'
23	PERFORATED METAL, COLOUR: 'SUNSHINE'
24	PERFORATED METAL, COLOUR: 'SUNSHINE'
25	PERFORATED METAL, COLOUR: 'SUNSHINE'
26	PERFORATED METAL, COLOUR: 'SUNSHINE'
27	PERFORATED METAL, COLOUR: 'SUNSHINE'
28	PERFORATED METAL, COLOUR: 'SUNSHINE'
29	PERFORATED METAL, COLOUR: 'SUNSHINE'
30	PERFORATED METAL, COLOUR: 'SUNSHINE'
31	PERFORATED METAL, COLOUR: 'SUNSHINE'
32	PERFORATED METAL, COLOUR: 'SUNSHINE'
33	PERFORATED METAL, COLOUR: 'SUNSHINE'
34	PERFORATED METAL, COLOUR: 'SUNSHINE'
35	PERFORATED METAL, COLOUR: 'SUNSHINE'
36	PERFORATED METAL, COLOUR: 'SUNSHINE'
37	PERFORATED METAL, COLOUR: 'SUNSHINE'
38	PERFORATED METAL, COLOUR: 'SUNSHINE'
39	PERFORATED METAL, COLOUR: 'SUNSHINE'
40	PERFORATED METAL, COLOUR: 'SUNSHINE'
41	PERFORATED METAL, COLOUR: 'SUNSHINE'
42	PERFORATED METAL, COLOUR: 'SUNSHINE'
43	PERFORATED METAL, COLOUR: 'SUNSHINE'
44	PERFORATED METAL, COLOUR: 'SUNSHINE'
45	PERFORATED METAL, COLOUR: 'SUNSHINE'
46	PERFORATED METAL, COLOUR: 'SUNSHINE'
47	PERFORATED METAL, COLOUR: 'SUNSHINE'
48	PERFORATED METAL, COLOUR: 'SUNSHINE'
49	PERFORATED METAL, COLOUR: 'SUNSHINE'
50	PERFORATED METAL, COLOUR: 'SUNSHINE'

PROJECT: WAREHOUSE 1&2 Chifley Business Park South
Lower Dandenong Rd, Moorabbin Airport, VIC

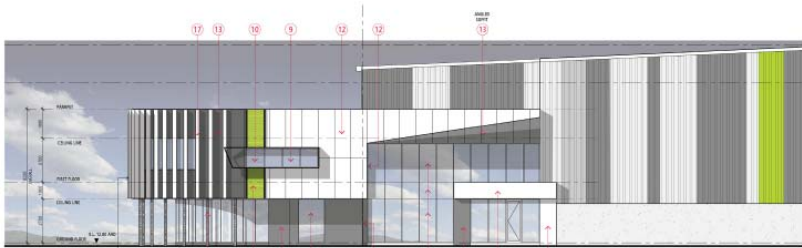
OVERALL ELEVATIONS
Warehouse 2



NOTE: ALL SIGNAGE LIGHTING TO BE DOWN-LIT OR BACK-LIT ONLY, IN ACCORDANCE WITH CIVIL AVIATION AUTHORITY REQUIREMENTS

DATE: November, 2016
DRAWN BY: SA
SCALE: 1:250 @ A1
SCALE: 1:500 @ A3

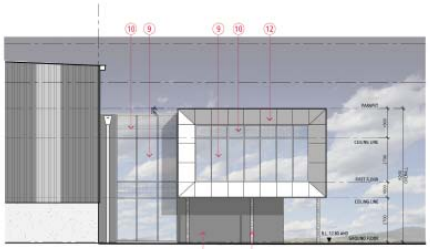
16223
TP2.4
B



NORTH ELEVATION
SCALE: 1:100



EAST ELEVATION
SCALE: 1:100



SOUTH ELEVATION
SCALE: 1:100

SCHEDULE	EXTERNAL FINISH
1	PERFORATED METAL, COLOUR: 'SUNSHINE'
2	PERFORATED METAL, COLOUR: 'SUNSHINE'
3	PERFORATED METAL, COLOUR: 'SUNSHINE'
4	PERFORATED METAL, COLOUR: 'SUNSHINE'
5	PERFORATED METAL, COLOUR: 'SUNSHINE'
6	PERFORATED METAL, COLOUR: 'SUNSHINE'
7	PERFORATED METAL, COLOUR: 'SUNSHINE'
8	PERFORATED METAL, COLOUR: 'SUNSHINE'
9	PERFORATED METAL, COLOUR: 'SUNSHINE'
10	PERFORATED METAL, COLOUR: 'SUNSHINE'
11	PERFORATED METAL, COLOUR: 'SUNSHINE'
12	PERFORATED METAL, COLOUR: 'SUNSHINE'
13	PERFORATED METAL, COLOUR: 'SUNSHINE'
14	PERFORATED METAL, COLOUR: 'SUNSHINE'
15	PERFORATED METAL, COLOUR: 'SUNSHINE'
16	PERFORATED METAL, COLOUR: 'SUNSHINE'
17	PERFORATED METAL, COLOUR: 'SUNSHINE'
18	PERFORATED METAL, COLOUR: 'SUNSHINE'
19	PERFORATED METAL, COLOUR: 'SUNSHINE'
20	PERFORATED METAL, COLOUR: 'SUNSHINE'
21	PERFORATED METAL, COLOUR: 'SUNSHINE'
22	PERFORATED METAL, COLOUR: 'SUNSHINE'
23	PERFORATED METAL, COLOUR: 'SUNSHINE'
24	PERFORATED METAL, COLOUR: 'SUNSHINE'
25	PERFORATED METAL, COLOUR: 'SUNSHINE'
26	PERFORATED METAL, COLOUR: 'SUNSHINE'
27	PERFORATED METAL, COLOUR: 'SUNSHINE'
28	PERFORATED METAL, COLOUR: 'SUNSHINE'
29	PERFORATED METAL, COLOUR: 'SUNSHINE'
30	PERFORATED METAL, COLOUR: 'SUNSHINE'
31	PERFORATED METAL, COLOUR: 'SUNSHINE'
32	PERFORATED METAL, COLOUR: 'SUNSHINE'
33	PERFORATED METAL, COLOUR: 'SUNSHINE'
34	PERFORATED METAL, COLOUR: 'SUNSHINE'
35	PERFORATED METAL, COLOUR: 'SUNSHINE'
36	PERFORATED METAL, COLOUR: 'SUNSHINE'
37	PERFORATED METAL, COLOUR: 'SUNSHINE'
38	PERFORATED METAL, COLOUR: 'SUNSHINE'
39	PERFORATED METAL, COLOUR: 'SUNSHINE'
40	PERFORATED METAL, COLOUR: 'SUNSHINE'
41	PERFORATED METAL, COLOUR: 'SUNSHINE'
42	PERFORATED METAL, COLOUR: 'SUNSHINE'
43	PERFORATED METAL, COLOUR: 'SUNSHINE'
44	PERFORATED METAL, COLOUR: 'SUNSHINE'
45	PERFORATED METAL, COLOUR: 'SUNSHINE'
46	PERFORATED METAL, COLOUR: 'SUNSHINE'
47	PERFORATED METAL, COLOUR: 'SUNSHINE'
48	PERFORATED METAL, COLOUR: 'SUNSHINE'
49	PERFORATED METAL, COLOUR: 'SUNSHINE'
50	PERFORATED METAL, COLOUR: 'SUNSHINE'

PROJECT: WAREHOUSE 1&2 Chifley Business Park South
Lower Dandenong Rd, Moorabbin Airport, VIC, 3194

OFFICE ELEVATIONS
Warehouse 1



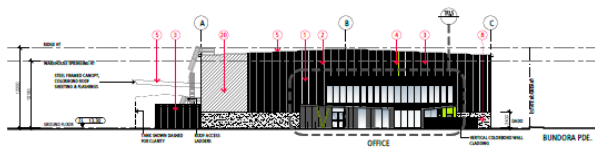
NOTE: ALL SIGNAGE LIGHTING TO BE DOWN-LIT OR BACK-LIT ONLY, IN ACCORDANCE WITH CIVIL AVIATION AUTHORITY REQUIREMENTS

DATE: November, 2016
DRAWN BY: SA
SCALE: 1:100 @ A1
SCALE: 1:200 @ A3

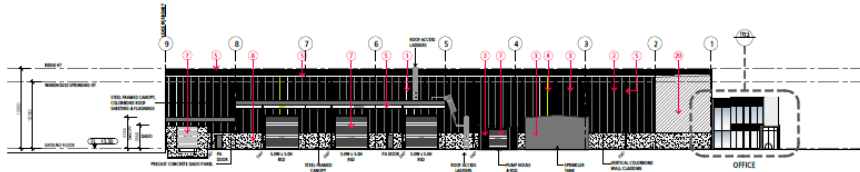
16223
TP1.5
B



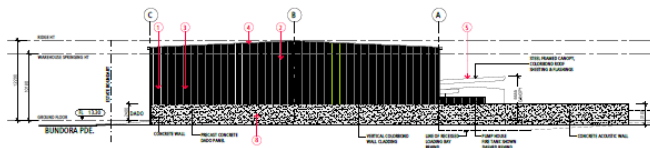
Warehouse Two



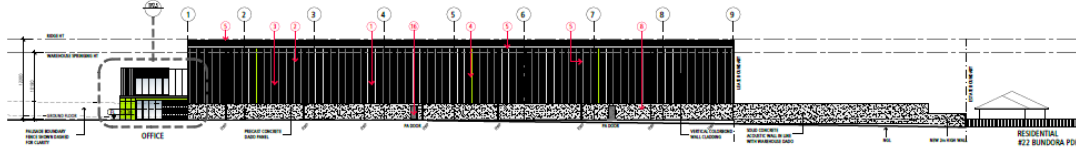
NORTH ELEVATION
SCALE: 1:250



EAST ELEVATION
SCALE: 1:250



SOUTH ELEVATION
SCALE: 1:250



WEST ELEVATION - BUNDORA PARADE
SCALE: 1:250

SCHEDULE	EXTERNAL FINISH
1	PERFORATED METAL CLADDING - 1500mm x 1000mm
2	PERFORATED METAL CLADDING - 1500mm x 1000mm
3	PERFORATED METAL CLADDING - 1500mm x 1000mm
4	PERFORATED METAL CLADDING - 1500mm x 1000mm
5	PERFORATED METAL CLADDING - 1500mm x 1000mm
6	PERFORATED METAL CLADDING - 1500mm x 1000mm
7	PERFORATED METAL CLADDING - 1500mm x 1000mm
8	PERFORATED METAL CLADDING - 1500mm x 1000mm
9	PERFORATED METAL CLADDING - 1500mm x 1000mm
10	PERFORATED METAL CLADDING - 1500mm x 1000mm
11	PERFORATED METAL CLADDING - 1500mm x 1000mm
12	PERFORATED METAL CLADDING - 1500mm x 1000mm
13	PERFORATED METAL CLADDING - 1500mm x 1000mm
14	PERFORATED METAL CLADDING - 1500mm x 1000mm
15	PERFORATED METAL CLADDING - 1500mm x 1000mm
16	PERFORATED METAL CLADDING - 1500mm x 1000mm
17	PERFORATED METAL CLADDING - 1500mm x 1000mm
18	PERFORATED METAL CLADDING - 1500mm x 1000mm
19	PERFORATED METAL CLADDING - 1500mm x 1000mm
20	PERFORATED METAL CLADDING - 1500mm x 1000mm
21	PERFORATED METAL CLADDING - 1500mm x 1000mm
22	PERFORATED METAL CLADDING - 1500mm x 1000mm
23	PERFORATED METAL CLADDING - 1500mm x 1000mm
24	PERFORATED METAL CLADDING - 1500mm x 1000mm
25	PERFORATED METAL CLADDING - 1500mm x 1000mm
26	PERFORATED METAL CLADDING - 1500mm x 1000mm
27	PERFORATED METAL CLADDING - 1500mm x 1000mm
28	PERFORATED METAL CLADDING - 1500mm x 1000mm
29	PERFORATED METAL CLADDING - 1500mm x 1000mm
30	PERFORATED METAL CLADDING - 1500mm x 1000mm

PROJECT: **WAREHOUSE 1&2 Chifley Business Park South**
Lower Dandenong Rd, Moorabbin Airport, VIC

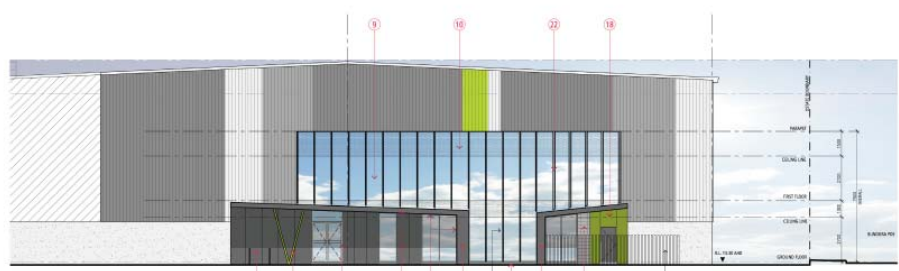
OVERALL ELEVATIONS
Warehouse 2



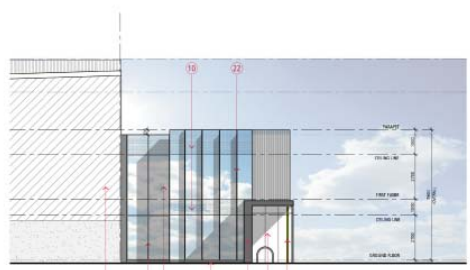
NOTE: ALL SIGNAGE LIGHTING TO BE DOWN LIT OR BACK LIT ONLY, IN ACCORDANCE WITH CIVIL AVIATION AUTHORITY REQUIREMENTS

DATE: November, 2016
DRAWN BY: SA
SCALE: 1:250 @ A1
SCALE: 1:500 @ A3

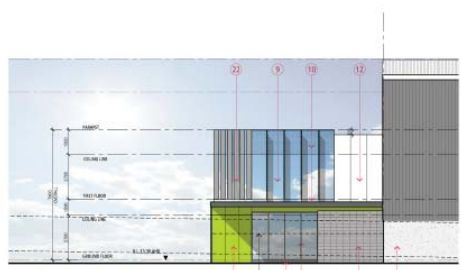
16223
TP2.4 B



NORTH ELEVATION
SCALE: 1:100



EAST ELEVATION
SCALE: 1:250



WEST ELEVATION
SCALE: 1:250

SCHEDULE	EXTERNAL FINISH
1	PERFORATED METAL CLADDING - 1500mm x 1000mm
2	PERFORATED METAL CLADDING - 1500mm x 1000mm
3	PERFORATED METAL CLADDING - 1500mm x 1000mm
4	PERFORATED METAL CLADDING - 1500mm x 1000mm
5	PERFORATED METAL CLADDING - 1500mm x 1000mm
6	PERFORATED METAL CLADDING - 1500mm x 1000mm
7	PERFORATED METAL CLADDING - 1500mm x 1000mm
8	PERFORATED METAL CLADDING - 1500mm x 1000mm
9	PERFORATED METAL CLADDING - 1500mm x 1000mm
10	PERFORATED METAL CLADDING - 1500mm x 1000mm
11	PERFORATED METAL CLADDING - 1500mm x 1000mm
12	PERFORATED METAL CLADDING - 1500mm x 1000mm
13	PERFORATED METAL CLADDING - 1500mm x 1000mm
14	PERFORATED METAL CLADDING - 1500mm x 1000mm
15	PERFORATED METAL CLADDING - 1500mm x 1000mm
16	PERFORATED METAL CLADDING - 1500mm x 1000mm
17	PERFORATED METAL CLADDING - 1500mm x 1000mm
18	PERFORATED METAL CLADDING - 1500mm x 1000mm
19	PERFORATED METAL CLADDING - 1500mm x 1000mm
20	PERFORATED METAL CLADDING - 1500mm x 1000mm
21	PERFORATED METAL CLADDING - 1500mm x 1000mm
22	PERFORATED METAL CLADDING - 1500mm x 1000mm
23	PERFORATED METAL CLADDING - 1500mm x 1000mm
24	PERFORATED METAL CLADDING - 1500mm x 1000mm
25	PERFORATED METAL CLADDING - 1500mm x 1000mm
26	PERFORATED METAL CLADDING - 1500mm x 1000mm
27	PERFORATED METAL CLADDING - 1500mm x 1000mm
28	PERFORATED METAL CLADDING - 1500mm x 1000mm
29	PERFORATED METAL CLADDING - 1500mm x 1000mm
30	PERFORATED METAL CLADDING - 1500mm x 1000mm

PROJECT: **WAREHOUSE 1&2 Chifley Business Park South**
Lower Dandenong Rd, Moorabbin Airport, VIC

OFFICE ELEVATIONS
Warehouse 2



NOTE: ALL SIGNAGE LIGHTING TO BE DOWN LIT OR BACK LIT ONLY, IN ACCORDANCE WITH CIVIL AVIATION AUTHORITY REQUIREMENTS

DATE: November, 2017
DRAWN BY: AM
SCALE: 1:100 @ A1
SCALE: 1:200 @ A3

16223
TP2.5 B



About Moorabbin Airport

“Australia’s leading flight training airport supporting a mix of activities and delivering employment, infrastructure improvements, investment into South East Melbourne”. Moorabbin Airport has 67 years of approved operations and holds a 99-year lease of the site.

Aviation related infrastructure is provided in a highly urbanised setting and supports:

- 250 businesses, 50 of which are aviation related
- 4,500 jobs, including the largest general aviation industry jobs cluster in the state and is 5% of the City of Kingston’s workforce
- 1,200 flight students being trained by a dozen flight training schools

Moorabbin Airport is:

- Located 21km south east of the CBD;
- 294 hectares and 2/3rds of the site is set aside for aviation related activities;
- Part of the Commonwealth owned airport network delivering our role of training and light aircraft separation from capital city passenger and freight activity
- Implementing Fly-Friendly procedures and responsible aviation practices



Moorabbin Airport

Moorabbin Airport Corporation
Airport Management Centre, 66 Bundora Parade,
Moorabbin Airport VIC 3194

T +61 3 8587 8000
www.moorabbinairport.com.au